

SA

SINTESIS ARQUITECTURA

SELECCION



SINTESIS ARQUITECTURA

ESPACIO SIMETRIAS
SPACE SYMMETRIES



MOSCÚ - RUSIA SEPTIEMBRE 2019
MOSCOW - RUSSIA SEPTEMBER 2019

CONCURSO INTERNACIONAL, PREMIO DE LA CATEGORÍA-PREMIO 3
INTERNATIONAL COMPETITION, PREMIO THIRD CATEGORY PRIZE

ARCHITECT
RAÚL GUTIÉRREZ SALGADO

**CONCURSO INTERNACIONAL ABIERTO PARA DISEÑO DE
DISEÑO ALTERNATIVO EN VIVIENDAS ESTÁNDAR, RUSIA**
OPEN INTERNATIONAL COMPETITION FOR ALTERNATIVE
LAYOUT DESIGN IN STANDARD HOUSING, RUSSIA

AUTOR ARCHITECT
RAÚL GUTIÉRREZ SALGADO
salgadoarchitect@gmail.com



El edificio residencial con locales integrados consta de 18 pisos sobre rasante y el área de estacionamiento subterráneo. En la planta baja del edificio hay locales empotrados para diversos fines y un grupo de lobby de la parte residencial; Desde el segundo piso hay apartamentos residenciales.

The residential building with integrated premises consists of 18 floors above ground and the underground parking area. On the ground floor of the building there are built-in premises for various purposes and a group of lobby in the residential part; From the second floor there are residential apartments.



FAÇADES COLOR COLOR DE FAÇADAS



ESTRUCTURA Y CONSTRUCCIONES

El sistema estructural del edificio es el marco. Las estructuras de soporte están diseñadas principalmente en forma de columnas monolíticas de hormigón armado y paredes de unidades de escaleras. Llenado de externa! Las paredes están hechas de bloques de hormigón celular, de 300 mm de espesor, así como un sistema de muro cortina, que incluye: aislamiento, un subsistema en forma de pernos metálicos, vapor o impermeabilización, así como placas con bisagras enfrentadas. Las paredes de la sala interior están hechas de unidades de pared no reforzadas de tipo celular con dimensiones de 390x190x188 mm. Las particiones interiores son placas hidrofobizadas,

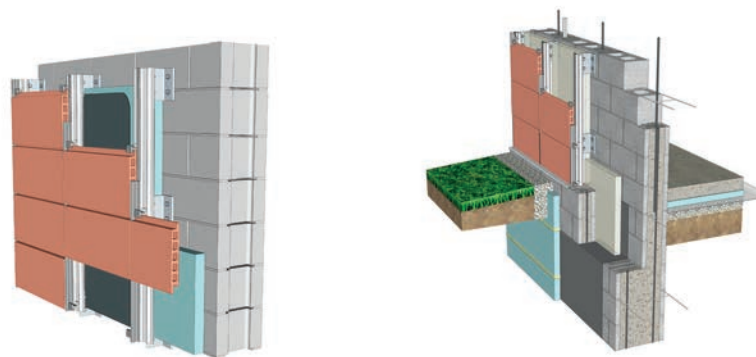
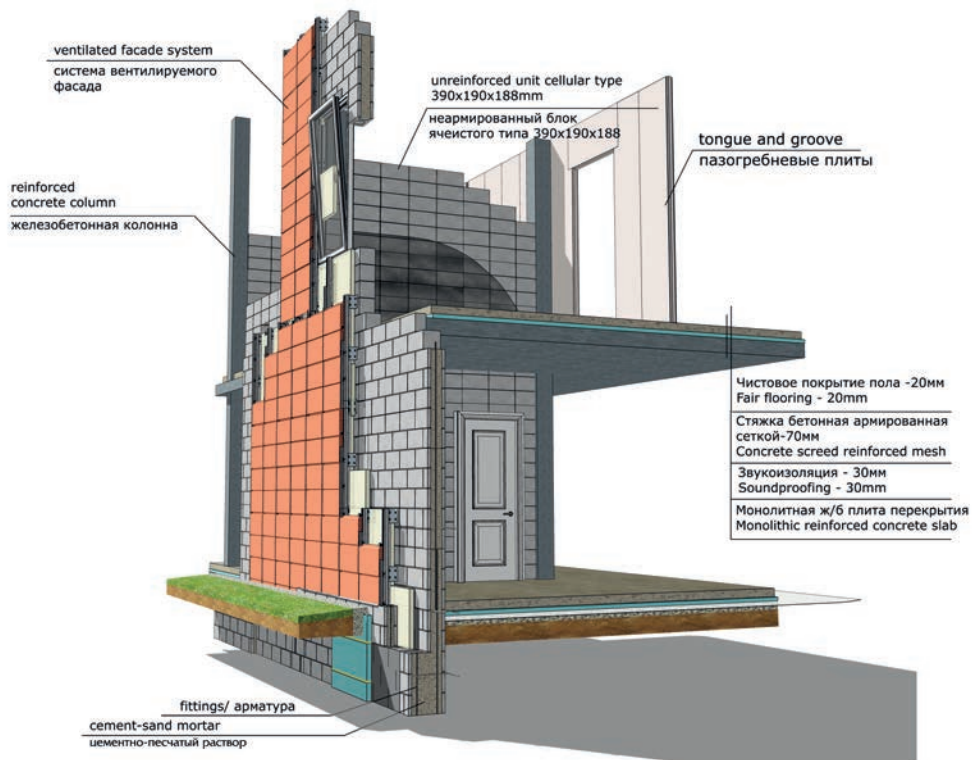
STRUCTURE AND CONSTRUCTIONS

The structural system of the building is frame. Bearing structures are designed mainly in the form of monolithic reinforced concrete columns and walls of stair-lift units. Filling of externa! walls is made of aerated concrete blocks, 300 mm thick, as well as a curtain wall system, which includes: insulation, a subsystem in the form of metal bolts, steam or waterproofing, as well as facing hinged plates. Inner room walls are made of non-reinforced wall units of cellular type with dimensions of 390x190x188 mm. The interior

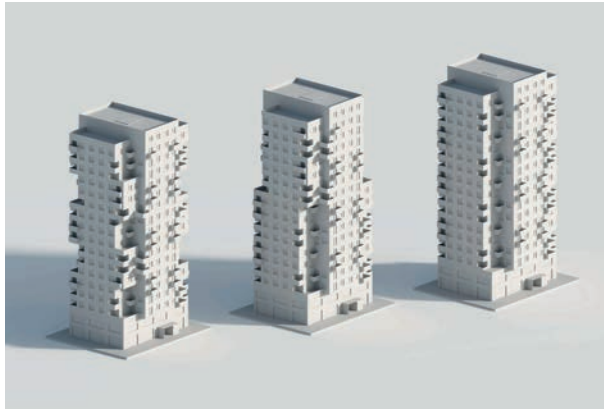
de 80 mm de espesor, machihembradas. La base es una base de pilotes, que consta de secciones individuales de pilotes aburridos y la placa base. La rigidez y la inmutabilidad espacial del edificio son proporcionadas por muros de hormigón armado monolíticos de los cubos de elevadores de escaleras a toda la altura del edificio, combinados con discos duros de techos entre pisos. Vigas y losas sin costura monolíticas (de hormigón). Una capa adicional de aislamiento provisto entre el suelo y los pisos subterráneos. El tramo de escaleras hasta la planta baja está hecho de hormigón armado monolítico en plataformas monolíticas, arriba hay un tramo modular en plataformas monolíticas. Los canales de ventilación son de hormigón armado prefabricado

partitions are hydrophobized, 80 mm thick, tongue-and-groove plates.

The foundation is a pile base, consisting of individual sections of bored piles and the base plate. The rigidity and spatial immutability of the building are provided by monolithic reinforced concrete walls of the stair-elevator hubs to the entire height of the building, combined by hard disks of interfloor ceilings. Beams and monolithic beamless slabs (made of concrete). An additional layer of insulation provided between the ground and underground floors. Flight of stairs up to the ground floor are made of monolithic reinforced concrete on



STRUCTURE+ CONSTRUCTIONS ESTRUCTURA + CONSTRUCCIÓN



SECTIONS A & ELEVATIONS EAST - NORTH SECCION A & ALZADOS ESTE - NORTE

fabricado en fábrica, soportan piso por piso contra vigas. Los pisos en la sala técnica del panel de distribución eléctrica se instalan mediante el sistema de pisos de instalación (elevados), lejos del cableado de las redes eléctricas.

monolithic platforms, above is a modular flight on monolithic platforms. Ventilation channels are prefabricated reinforced concrete factory made, bear floor-by-floor against beams. Floors in the technical room of the electrical switchboard panel are installed by the system of installations (raised) floors, far the wiring of electrical networks.



SECTIONS B & ELEVATIONS EAST - NORTH SECCION A & ALZADOS OESTE - SUR

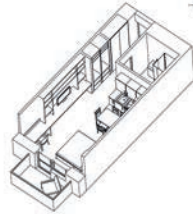
APARTMENTS LAYOUTS
DISEÑOS DE APARTAMENTOS

MEDIUM SIZE APARTMENTS
APARTAMENTOS DE TAMAÑO MEDIO
TYPES TIPOS 25 & 45



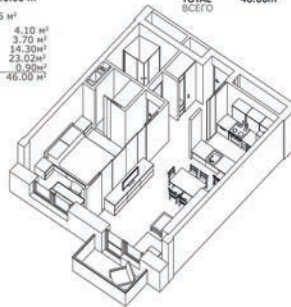
STUDIO 25m²
HALL 3.00 m²
WC 3.70 m²
BEDROOM 18.00m²
BALCONY 0.30m²
TOTAL 25.60 m²

СТУДИЯ 25 м²
ХОЛЛ 3.00 м²
СУ 3.70 м²
СПАЛЬНЯ 18.00м²
БАЛКОН 0.30м²
ВСЕГО 25.60 м²



1 BEDROOM 45 m²
HALL 4.10 m²
WC 3.70 m²
BEDROOM 14.30m²
LIVINGROOM 23.02m²
BALCONY 0.90m²
TOTAL 46.00 m²

1 СПАЛЬНЯ 45 м²
ХОЛЛ 4.10 м²
СУ 3.70 м²
СПАЛЬНЯ 14.30м²
ГОСТИННАЯ 23.02м²
БАЛКОН 0.90м²
ВСЕГО 46.00 м²



ALTERNATIVE 45 m²
АЛЬТЕРНАТИВНЫЙ ВАРИАНТ S: 11200
31.90m²
3.70m²
10.45m²
TOTAL ВСЕГО 46.00m²

1 СПАЛЬНЯ 45 м²
ХОЛЛ 4.10 м²
СУ 3.70 м²
СПАЛЬНЯ 14.30м²
ГОСТИННАЯ 23.02м²
БАЛКОН 0.90м²
ВСЕГО 46.00 м²



1 BEDROOM 45 m²
HALL 6.83 m²
WC 3.89 m²
BEDROOM 14.71m²
LIVINGROOM 19.14m²
BALCONY 0.90m²
TOTAL 45.47 m²

1 СПАЛЬНЯ 45 м²
ХОЛЛ 6.83 м²
СУ 3.89 м²
СПАЛЬНЯ 14.71 м²
ГОСТИННАЯ 19.14м²
БАЛКОН 0.90м²
ВСЕГО 45.47 м²



ALTERNATIVE 45 m²
АЛЬТЕРНАТИВНЫЙ ВАРИАНТ S: 11200
28.83m²
1.69m²
15.17m²
TOTAL ВСЕГО 45.00m²

1 СПАЛЬНЯ 45 м²
ХОЛЛ 6.83 м²
СУ 3.89 м²
СПАЛЬНЯ 14.71 м²
ГОСТИННАЯ 19.14м²
БАЛКОН 0.90м²
ВСЕГО 45.47 м²

MEDIUM-SIZE APARTMENTS
КВАРТИРЫ СРЕДНЕГО РАЗМЕРА

APARTMENT TYPES 25 & 45
ТИПЫ КВАРТИР 25 & 45

SCALE 1:100

- 1 HALL
- 2 WC
- 3 KITCHEN
- 4 LIVINGROOM
- 5 BALCONY
- 6 LAUNDRY
- 7 BEDROOM
- 8 STORE
- 9 STUDY



APARTMENTS LAYOUTS
DISEÑOS DE APARTAMENTOS

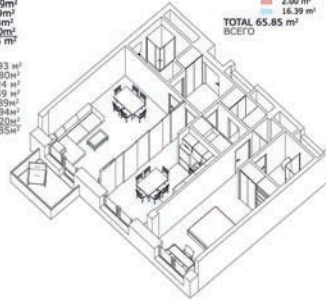
MEDIUM SIZE APARTMENTS
APARTAMENTOS DE TAMAÑO MEDIO
TIPO TFO 65



1 BEDROOM 65 m²
HALL 9.93 m²
BEDROOM 13.80 m²
WC 4.24 m²
WC 5.59 m²
LIVINGROOM 17.89 m²
KITCHEN 12.94 m²
BALCONY 1.20 m²
TOTAL 65.85 m²

ALTERNATIVE 65 m²
АЛЬТЕРНАТИВНЫЙ ВАРИАНТ
§ 1.200
48.88 m²
2.60 m²
16.39 m²
TOTAL 65.85 m²
ВСЕГО

1 СПАЛЬНЯ 65 м²
ХОЛЛ 9.93 м²
СПАЛЬНЯ 13.80 м²
СУ 4.24 м²
СУ 5.59 м²
ГОСТИННАЯ 17.89 м²
КУХНЯ 12.94 м²
БАЛКОН 1.20 м²
ВСЕГО 65.85 м²



MEDIUM-SIZE APARTMENTS
КВАРТИРЫ СРЕДНЕГО РАЗМЕРА

APARTMENT TYPE 65
ТИП КВАРТИР 65



1 BEDROOM 65 m²
HALL 8.84 m²
BEDROOM 14.79 m²
WC 4.14 m²
WC 3.07 m²
LIVINGROOM 27.53 m²
KITCHEN 12.94 m²
BALCONY 1.20 m²
TOTAL 65.05 m²

ALTERNATIVE 65 m²
АЛЬТЕРНАТИВНЫЙ ВАРИАНТ
§ 1.200
47.89 m²
2.2 m²
13.69 m²
ВСЕГО / TOTAL 65.05 m²

1 СПАЛЬНЯ 65 м²
ХОЛЛ 8.84 м²
СПАЛЬНЯ 14.79 м²
СУ 4.14 м²
СУ 3.07 м²
ГОСТИННАЯ 27.53 м²
КУХНЯ 12.94 м²
БАЛКОН 1.20 м²
ВСЕГО 65.05 м²



1 ХОЛЛ 1 HALL
2 СУ 2 WC
3 КУХНЯ 3 KITCHEN
4 ГОСТИННАЯ 4 LIVINGROOM
5 БАЛКОН 5 BALCONY
6 ПРАЧЕЧНАЯ 6 LAUNDRY
7 СПАЛЬНЯ 7 BEDROOM
8 КЛАДОВАЯ 8 STORE
9 УЧЕБА 9 STUDY

SCALE 1:100



APARTMENTS LAYOUTS
DISEÑOS DE APARTAMENTOS

MEDIUM SIZE APARTMENTS
APARTAMENTOS DE TAMAÑO MEDIO
TYPE TIPO 85

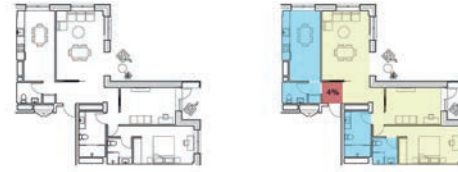


2 BEDROOM 85 m²
 HALL 12.14 m²
 BEDROOM 11.86 m²
 BEDROOM 17.13 m²
 WC 6.05 m²
 WC 4.64 m²
 LIVINGROOM 19.49 m²
 LAUNDRY 2.40 m²
 BALCONY 1.20 m²
 KITCHEN 10.86 m²
 TOTAL 85.77 m²

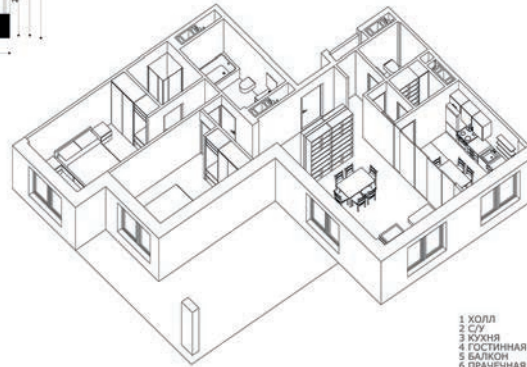
2 СПАЛЬНИ 85 м²
 ХОЛЛ 12.14 м²
 СПАЛЬНЯ 11.86 м²
 СПАЛЬНЯ 17.13 м²
 С/У 6.05 м²
 С/У 4.64 м²
 ГОСТИНАЯ 19.49 м²
 ПРАЧЕЧНАЯ 2.40 м²
 БАЛКОН 1.20 м²
 КУХНЯ 10.86 м²
 ВСЕГО 85.77 м²

MEDIUM-SIZE APARTMENTS
КВАРТИРЫ СРЕДНЕГО РАЗМЕРА

APARTMENT TYPE 85
ТИП КВАРТИР 85



ALTERNATIVE 85 m²
АЛЬТЕРНАТИВНЫЙ
ВАРИАНТ 85 m²
 51.41 m²
 25.75 m²
 TOTAL 79.96 m²
ВСЕГО



SCALE 1:100

1 ХОЛЛ 1 HALL
 2 С/У 2 WC
 3 КУХНЯ 3 KITCHEN
 4 ГОСТИНАЯ 4 LIVINGROOM
 5 БАЛКОН 5 BALCONY
 6 ПРАЧЕЧНАЯ 6 LAUNDRY
 7 СПАЛЬНЯ 7 BEDROOM
 8 КЛАДОВАЯ 8 STORE
 9 УЧЕБА 9 STUDY



APARTMENTS LAYOUTS
DISEÑOS DE APARTAMENTOS

MEDIUM SIZE APARTMENTS
APARTAMENTOS DE TAMAÑO MEDIO
TYPE TPO 85

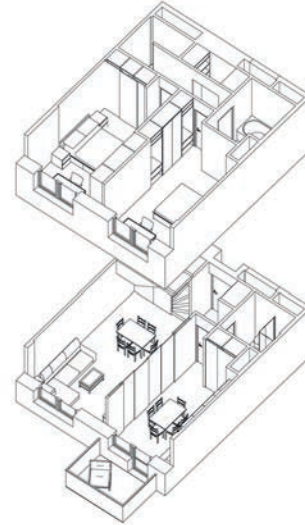


ALTERNATIVE 85 m²
АЛЬТЕРНАТИВНЫЙ
ВАРИАНТ 85 м²
30.70 m²
2.70 m²
18.70 m²
TOTAL 42.00 m²
ВСЕГО

ALTERNATIVE 85 m²
АЛЬТЕРНАТИВНЫЙ
ВАРИАНТ 85 м²
30.88 m²
9.37 m²
TOTAL 40.25 m²
ВСЕГО

2 BEDROOM 85 m²
HALL 5.55 m²
WC 3.80 m²
KITCHEN 13.68 m²
LIVINGROOM 20.76 m²
CLOSET 2.76 m²
BALCONY 1.50 m²
WC 4.90 m²
BEDROOM 15.00 m²
BEDROOM 15.82 m²
TOTAL 84.07 m²

2 СПАЛЬНИ 85 м²
ХОЛЛ 5.55 м²
С/У 3.80 м²
КУХНЯ 13.68 м²
ГОСТИННАЯ 20.76 м²
ТУАЛЕТ 2.76 м²
БАЛКОН 1.50 м²
С/У 4.90 м²
СПАЛЬНЯ 15.00 м²
СПАЛЬНЯ 15.82 м²
ВСЕГО 84.07 м²



- 1 ХОЛЛ
 - 2 С/У
 - 3 КУХНЯ
 - 4 ГОСТИННАЯ
 - 5 БАЛКОН
 - 6 ПРАЧЕЧНАЯ
 - 7 СПАЛЬНЯ
 - 8 КЛАДОВКА
 - 9 УЧЕБА
- 1 HALL
 - 2 WC
 - 3 KITCHEN
 - 4 LIVINGROOM
 - 5 BALCONY
 - 6 LAUNDRY
 - 7 BEDROOM
 - 8 STORE
 - 9 STUDY

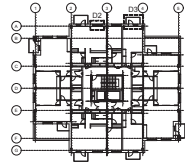
MEDIUM-SIZE APARTMENTS
КВАРТИРЫ СРЕДНЕГО РАЗМЕРА

APARTMENT TYPE 85
ТИП КВАРТИР 85

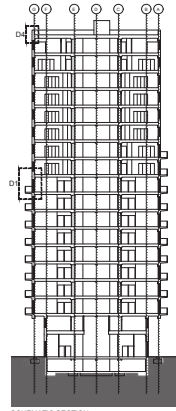
SCALE 1:100



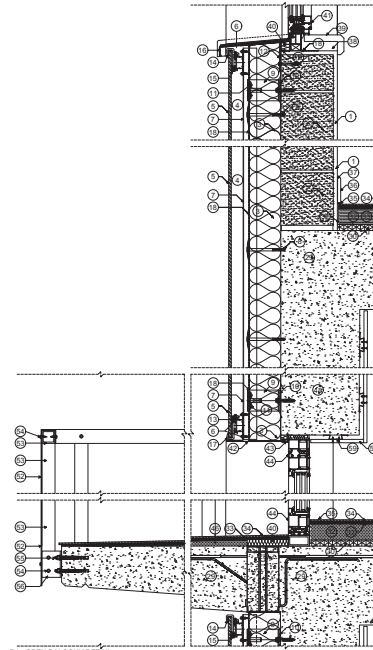
1. FINISHING WALL COVERING 15mm
2. CONCRETE BLOCK WALL 200mm
3. ROCKWOOL INSULATION 120mm
4. AIR CHAMBER 68mm
5. PORCELAIN PANELS ON THE VENTILATED FACADE SYSTEM 100mm
6. FIXING SCREW
- 7.1 PROFILE 40x50
8. INSULATION HOLDERS
9. WALL ANGLE
10. THERMOSTOP
11. LUK RIVET
12. WINDOW SILL HOLDER
13. SUPPORT PROFILE A
14. END BRACKET
15. GLASS INVERSION PROFILE
16. WINDOW SILL INCLUDING ON-BOARD PROFILES
17. START BRACKET
18. WATERPROOF MEMBRANE
19. PERFORATED ALUMINUM ANGLE AS VENTILATION PROFILE
20. MARINE PLYWOOD
21. ROOFING MEMBRANE
22. POLYETHYLENE MEMBRANE
23. CONTINUOUS SHEET STRIP IN VM ZINC, th= 7mm
24. VMZ STANDING SEAM IN VMZINC PLUS
25. VMZ HEAD SADDLE PIECE
26. SHEET CLIP IN VMZINC PLUS, th= 0.7mm min, w=80mm, 2 per m.
27. TAPERED RIGID INSULATION
28. THERMAL BREAK SCHÖCK ISOKORB TYPE KXT
29. REINFORCED CONCRETE SLAB
30. THERMAL AND ACOUSTIC INSULATION insu# B-20
31. SELF-ADHESIVE PERIMETER STRIP Ulean 18
32. REINFORCED SCREED 61mm
33. TILE MORTAR
34. CERAMIC TILE
35. FLEXIBLE SEAL 5mm
36. WOODEN BASEBOARD
37. PU EXPRESS MONTAGE ADHESIVE AKFIX 610
38. PU EXPRESS MONTAGE ADHESIVE AKFIX 610
39. WOODEN SILL
40. RIGID THERMAL INSULATION
41. TRIPLE GLAZING WINDOW - CORTIZO COR-80 HIDDEN SASH
42. ALUMINUM LINTEL - SOFFIT PROFILE
43. INSERTION STRIP
44. TRIPLE GLAZING DOOR - CORTIZO MILLENNIUM PLUS 80
45. CONCRETE BEAM
46. LEVELING MORTAR
47. START BRACKET OR CENTER BRACKET
48. SF MIDDLE BRACKET
49. SF END BRACKET WITH INSET
50. CORNER CONNECTOR
51. ALUMINUM SHEET
52. PERFORATED GALVANIZED STEEL SHEET 3mm
53. STEEL SQUARE HOLLOW SECTION 50X50mm
54. SELF DRILLING SCREW
55. CONCRETE EXPANSION ANCHOR
56. STEEL ANGLE 50X75mm
57. DOUBLE GLAZING DOOR - CORTIZO MILLENNIUM 2000
58. PLASTERBOARD PANEL
59. SUPPORTING PROFILE
60. IPE 160 BEAM
61. CONCRETE FILLING
62. STEEL ANGLE 100X50mm
63. STEEL ANGLE 280x100mm
64. CORTIZO MILLENNIUM 2000 FIXED GLAZING
65. STEEL ANGLE 50X40mm
66. THREADED BAR
67. NUT AND WASHER
68. HANGING PIECE
69. PLADUR PRIMARY PROFILE
70. PLADUR SECONDARY PROFILE
71. REGISTRABLE PLASTERBOARD CEILING
72. STEEL RECTANGULAR HOLLOW SECTION 80X40mm
73. STEEL RECTANGULAR HOLLOW SECTION 100X50mm
74. SLIDING FOLDING SYSTEM FOR BALCONY
75. STAINLESS STEEL CABLE 1/4"
76. STEEL RECTANGULAR HOLLOW SECTION 200X100mm
77. SPRAY POLYURETHANE FOAM INSULATION
78. GEOTEXTILE 125g/m² UNDER PVC SHEET
79. FIBERGLASS REINFORCED PVC SHEET
80. GEOTEXTILE 200g/m² OVER PVC SHEET
81. THERMAL INSULATION - EXTRUDED POLYSTYRENE
82. GEOTEXTILE 125g/m² OVER INSULATION
83. SEPARATION MEMBRANE TGV 21
84. DRAINAGE ELEMENT FLORADRAIN FD 25-E
85. FILTRATION LAYER
86. SOIL
87. STEEL SHEET PROFILE
88. ANODIZED ALUMINUM COPING
89. CONCRETE BLOCK 20X20X40cm
90. 316 GRADE STAINLESS STEEL PIPE Ø50MM
91. STEEL PLATE 20X10cm
92. STEEL PLATE, THICKNESS: 10mm
93. IPE 180 BEAM
94. ANCHOR BOLT Ø1"
95. STEEL PLATE 10X10cm
96. ANCHOR BOLT Ø 1/2"
97. ANCHOR PLATE 9.5mm
98. CONCRETE STEP WITH CHAMFER
99. 304-GRADE STAINLESS STEEL PIPE Ø50mm
100. 304-GRADE STAINLESS STEEL PIPE Ø30mm
101. LNP 180 PROFILE



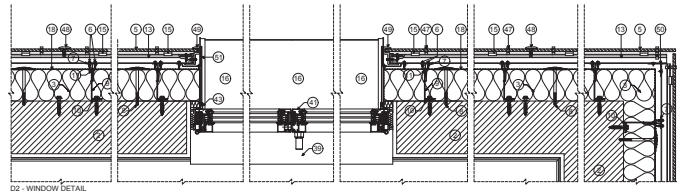
SCHEMATIC FLOOR PLAN



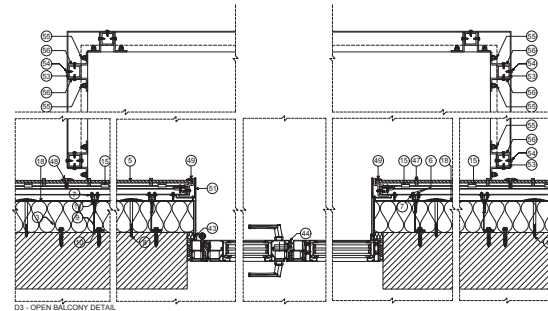
SCHEMATIC SECTION



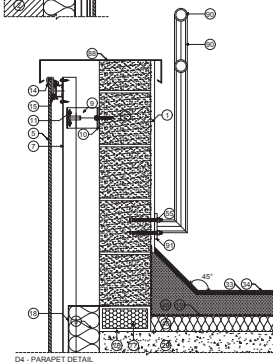
D1 - OPEN BALCONY DETAIL



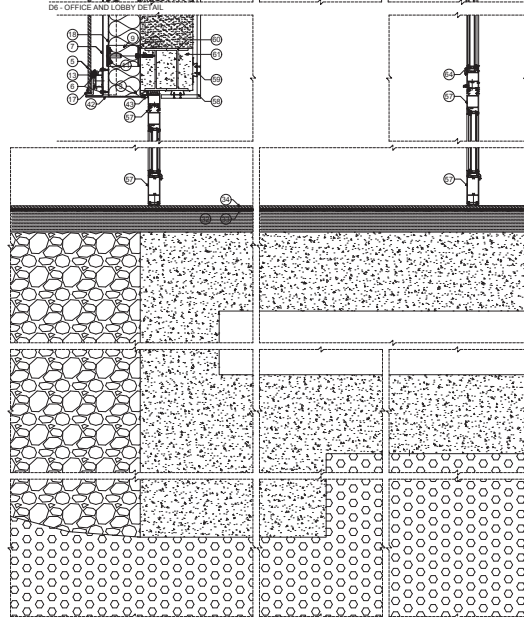
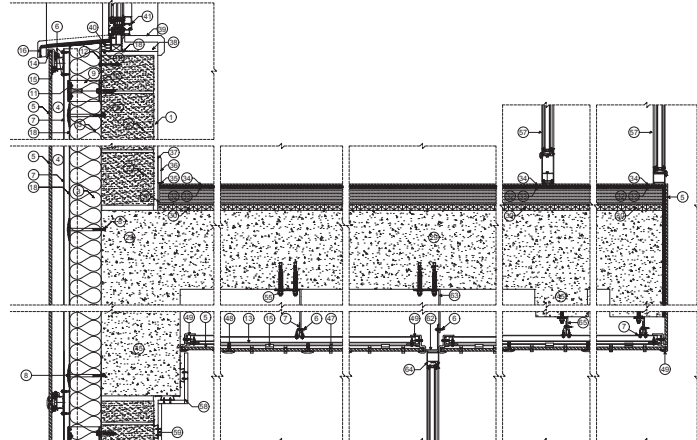
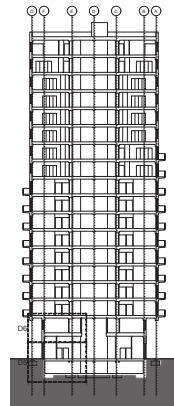
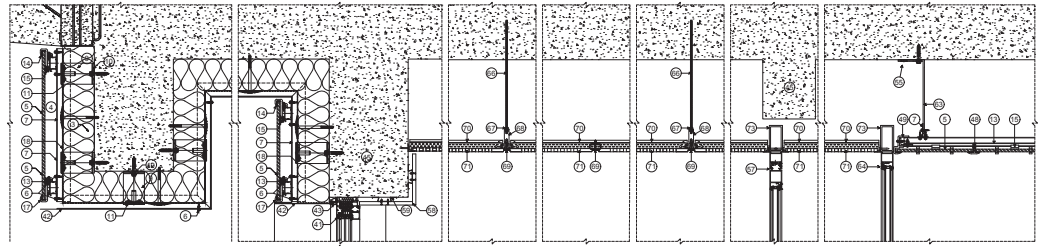
D2 - WINDOW DETAIL



D3 - OPEN BALCONY DETAIL



D4 - PARAPET DETAIL



D5 - LOBBY AND BASEMENT DETAIL